



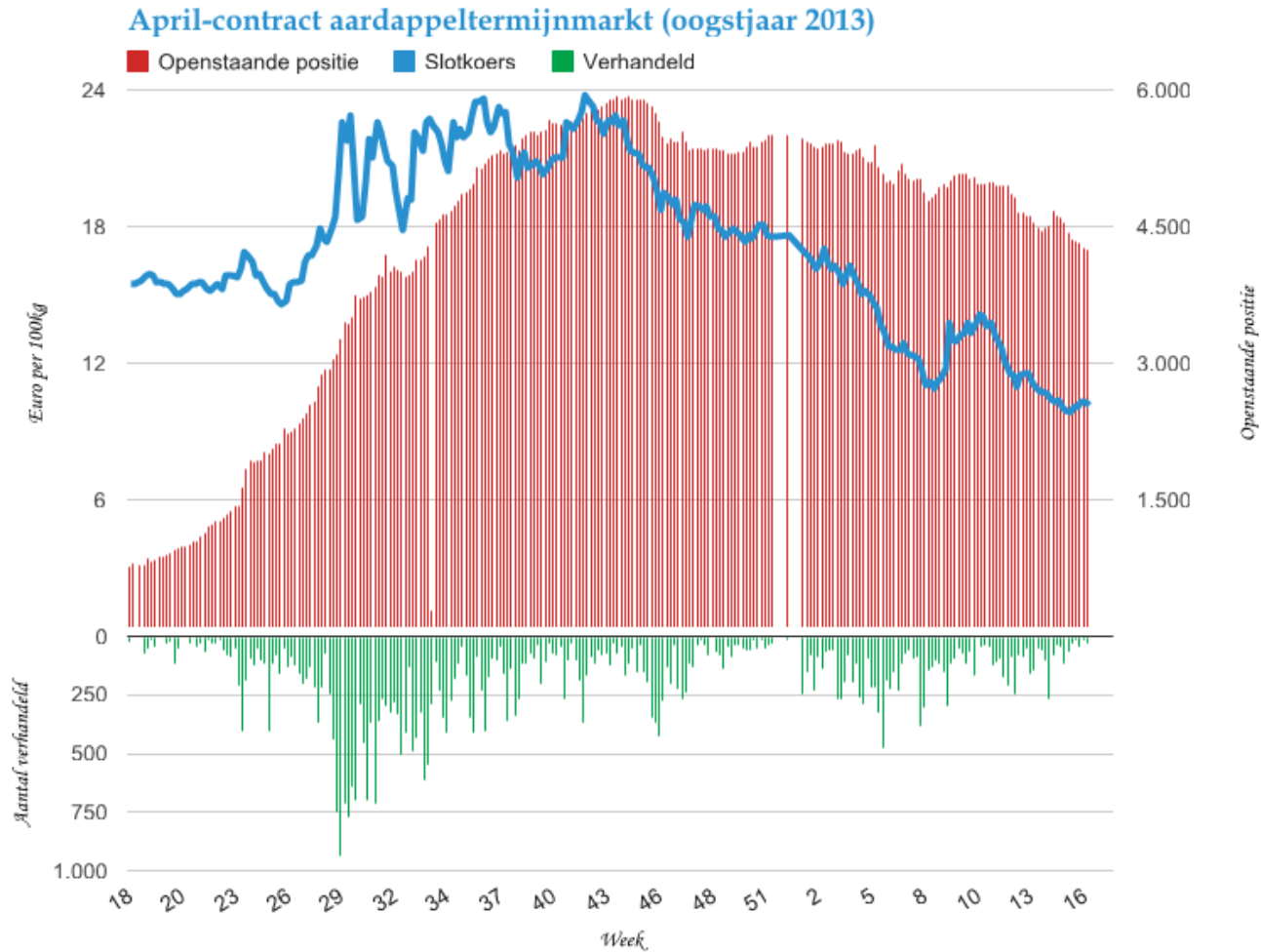
Potato

*Creating value from potatoes*

# Market update 2014

Week 16

# Futures price for April (harvest 2013)



# NEPG Press Release of 15/04/14

***NEPG estimates this year's potato area between 3,5 and 4% more than last season***

***Based upon grower surveys in the 5 main potato countries, the NEPG (North-Western European Potato Growers) calculates with an area growth for consumption potatoes between 3,5 and 4% more, compared either with last season or with the 5 years average. Especially in France and Belgium the increase is the highest. The total consumption area will be almost 550.000 ha. The NEPG already calculated with an increase, however, this is less than expected. For Great Britain the 5 year average area is used, as their first estimations are only published at the end of June. The NEPG stresses that it is always the yield per hectare which has the most impact on the total production.***

## Planting situation

Overall plantings are ahead of schedule. With exception of the heavy clay, the planting conditions are good, but soils are difficult to prepare and the soil structure is more susceptible to the drought than other years. About 60% has been planted by the middle of April in the NEPG countries. It is obvious that it is still too early to make an estimation about the total crop 2014. The lack of rain in the most production regions is now obvious.

## More contracts

For coming season more contracts have been signed than the year before, despite of lower prices compared to last season. According to the NEPG there is an trend with more growers signing contracts, mainly with potato processors. The price paid for contracted tonnage and additional "free buy" tonnage remains a contentious issue.



# Potato planting in China (Gansu)

The ridges are prepared and covered with plastic



[Watch movie](#)

# Potato planting in China (Gansu)

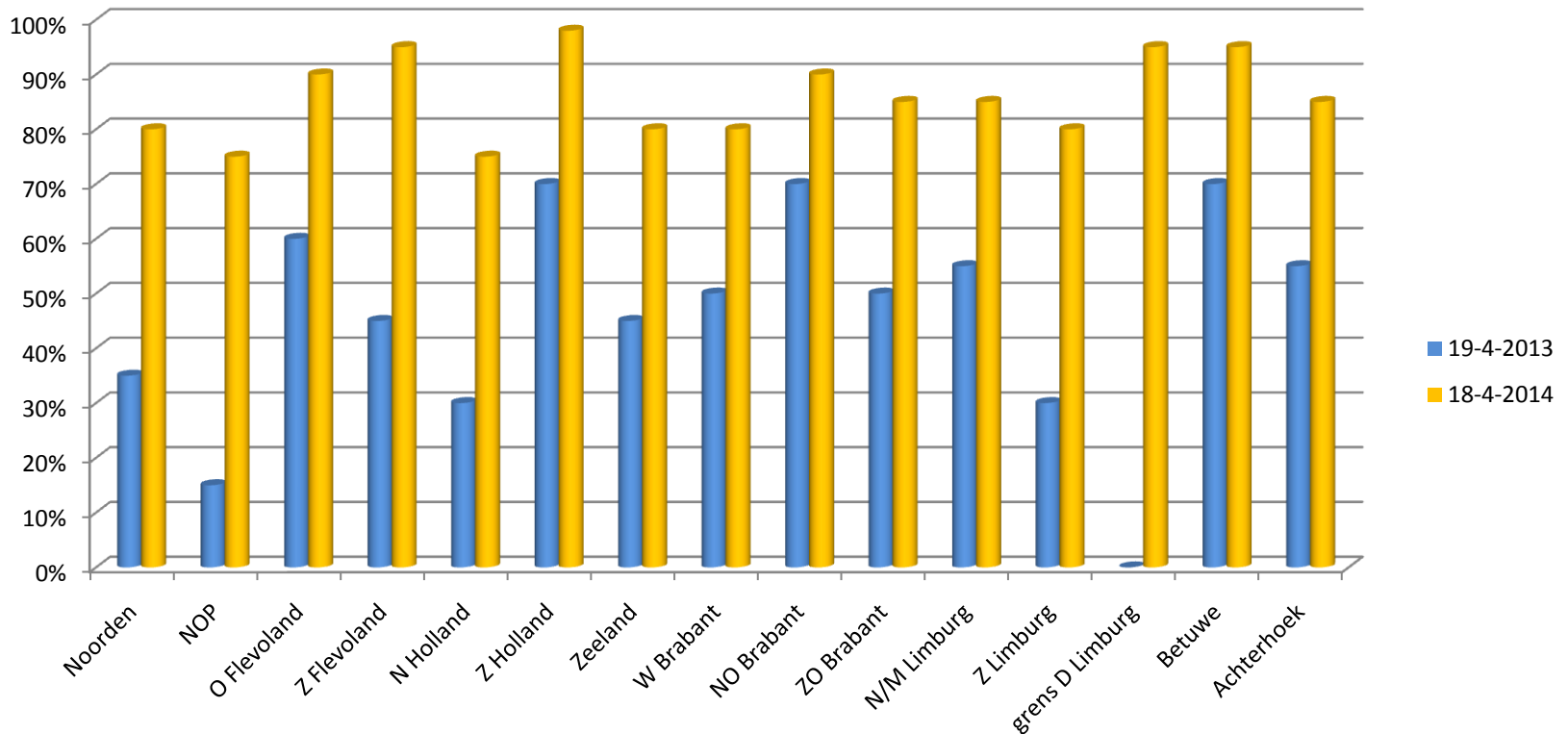


9 “pieces” of seed potatoes are planted in one meter ridge and covered with ground



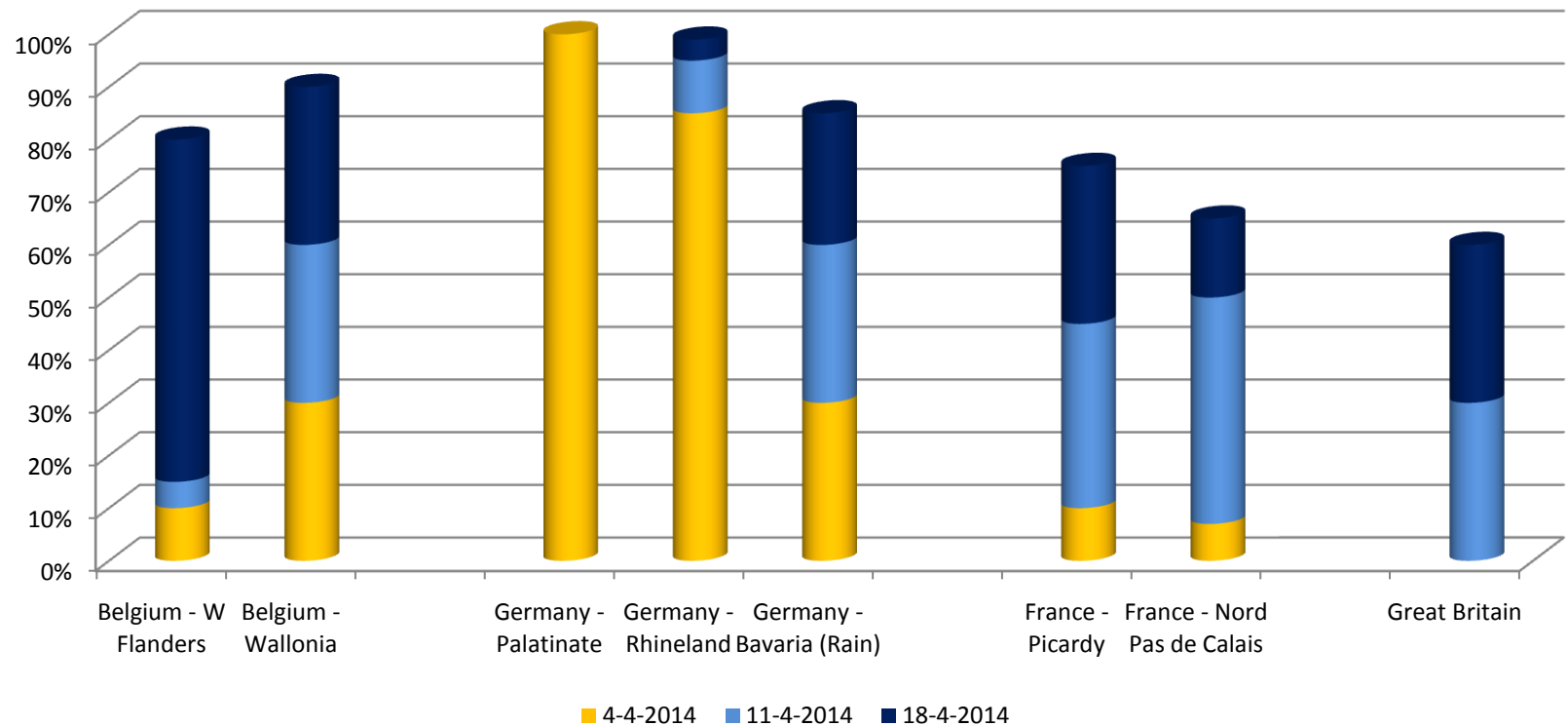
# Planting progress – Netherlands (per region)

Comparison of the years 2013 and 2014



# Planting progress – Germany, France, Belgium, UK

Year 2014



# Quotations of the week

Fry quality	Week 12	Week 13	Week 14	Week 15	Week 16
NL – Goes	105-155	102,5-147,5	100-145	95-140	90-130
NL – Emmeloord	-	100-137,5	100-125	95-100	95-115
NL – Rotterdam	100-155	100-150	100-140	95-135	95-130
BE – FIWAP/PCA Bintje	100	90-100	90-95	85-90	80-90
BE – Belgapom Bintje	100	95	90	87,5	80
FR – RNM Bintje	95	92	90	88	85
DE – REKA Fontane	105	100	95	92,5	90
Cash Settlement	116	113	111	106	103
Other	Week 12	Week 13	Week 14	Week 15	Week 16
NL – Goes Export	85-115	85-110	85-110	80-100	80-100
NL – Emmeloord Export	100-130	90-135	90-125	85-120	85-115
NL – Rotterdam dehydration >360	65-95	60-90	60-80	60-75	62,5

Prices in €/ton